



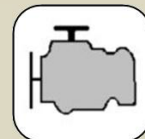
Technical Data

Specification & Capacities



JF40

S.N: _____



7,6kW/10,4HP



2 kW / 2,7HP



1,6 – 5,8m



WINCH: 995kg
HOOK : 2500kg



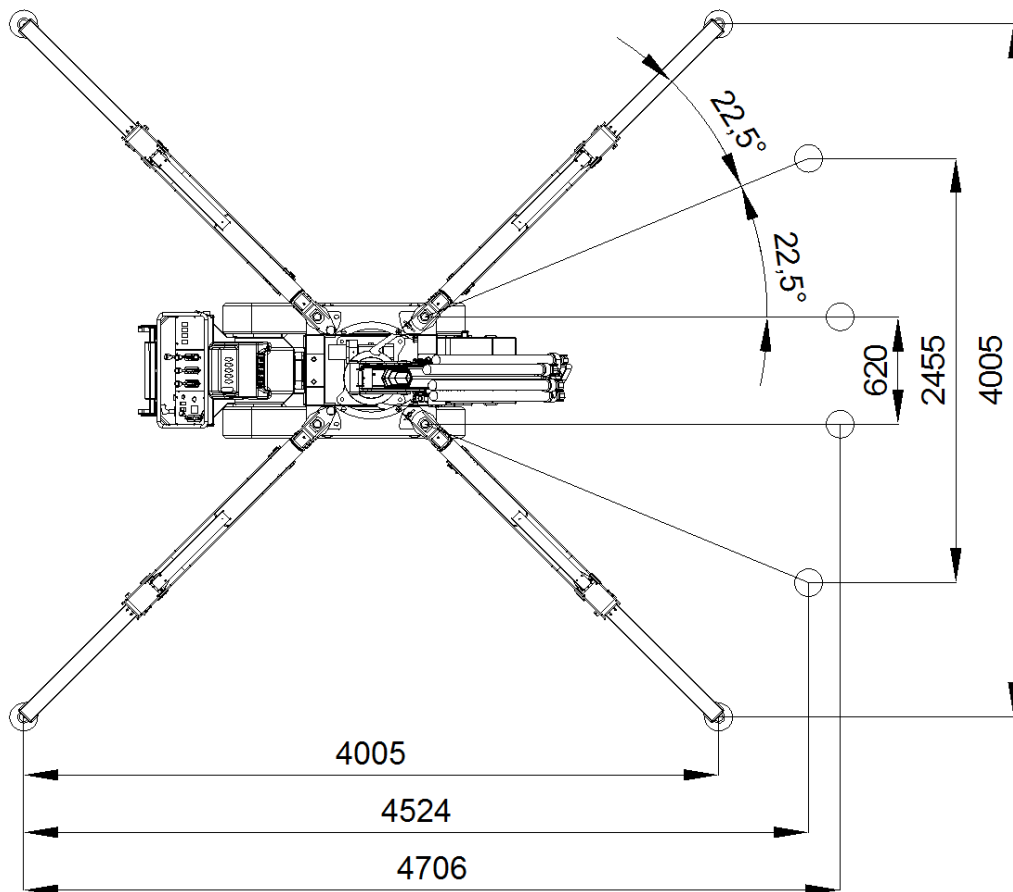
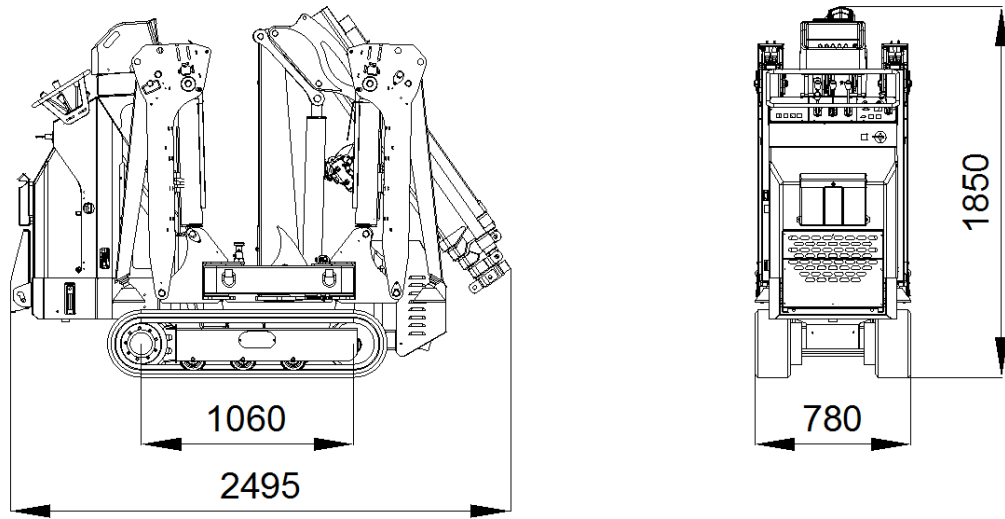
EN 12999





[m] [kg]










Via Campardone, 1
31014 Colle Umberto – Italy
Tel. +39 0438 1710083
Mail: info@jekko.it
Web: www.jekko.it

Date	May 23 rd 2017
REV.	DRAFT Rev. 1


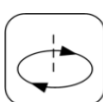

JF40 - OVERALL DIMENSIONS

		kg
		1500
		0
	Tot.	1500

	YAMAHA MZ 360		7,6kW / 10,4 HP	
			GASOLINE	
			I	6

	MONOPHASE ELECTRIC POWER		2 kW / 2,7 HP	
			220V AC	

	km/h	2,4
	20°	
	kg/cm ²	0,35
	kg	1300

	70°	
	337°	
	m	1,6 - 5,8

HOIST PERFORMANCE

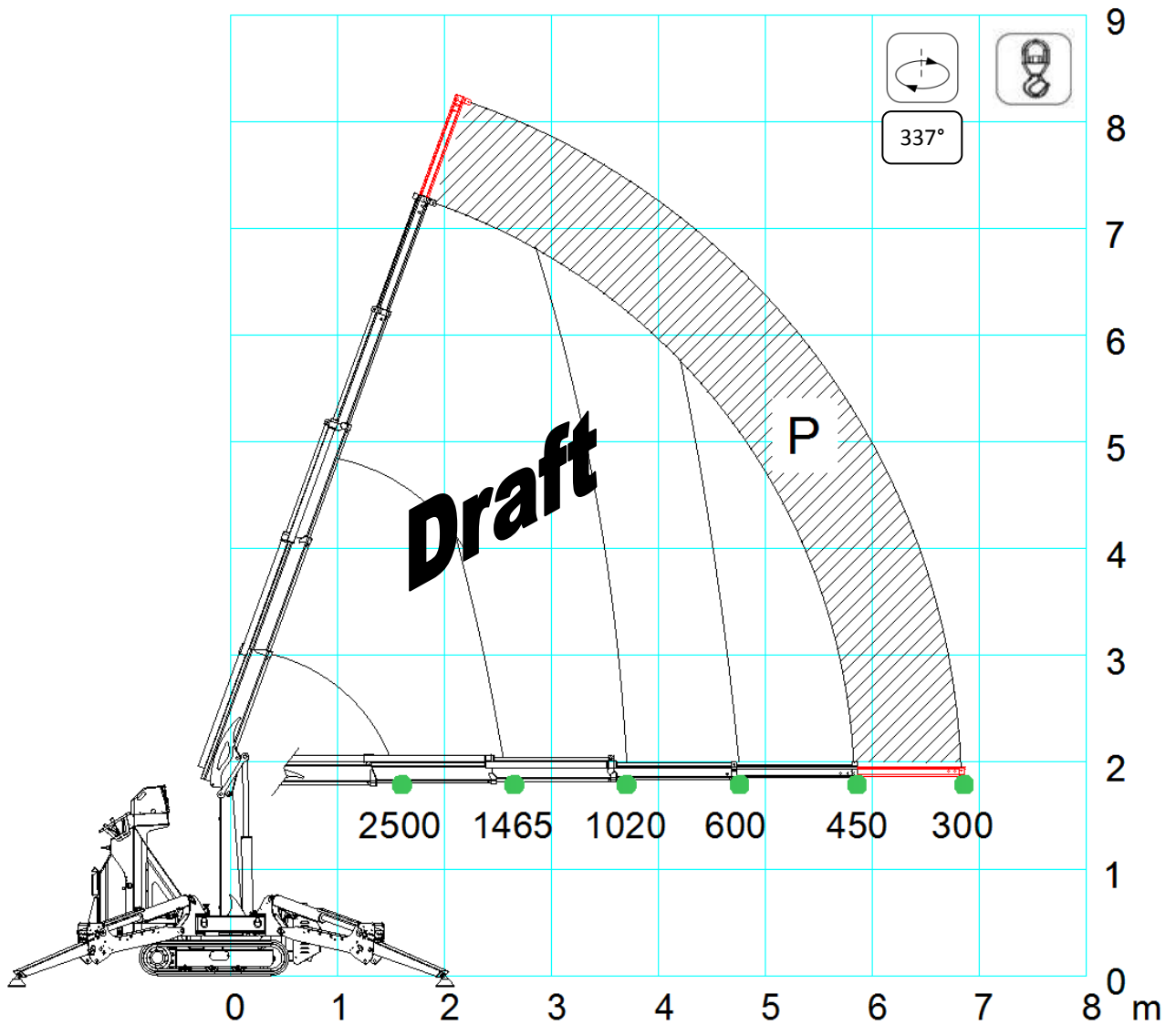
Layer	Max Line Pull*	Normal Line Speed	High Line Speed
	kg	m/min	m/min
1	600	27	--
2	560	29	--
3	520	31	--
4	485	33	--

*LMI limited to 500kg

Wire Rope	Diameter	Tot. Length	Max Load
	mm	m	kg
Right lang lay	6	36	2650

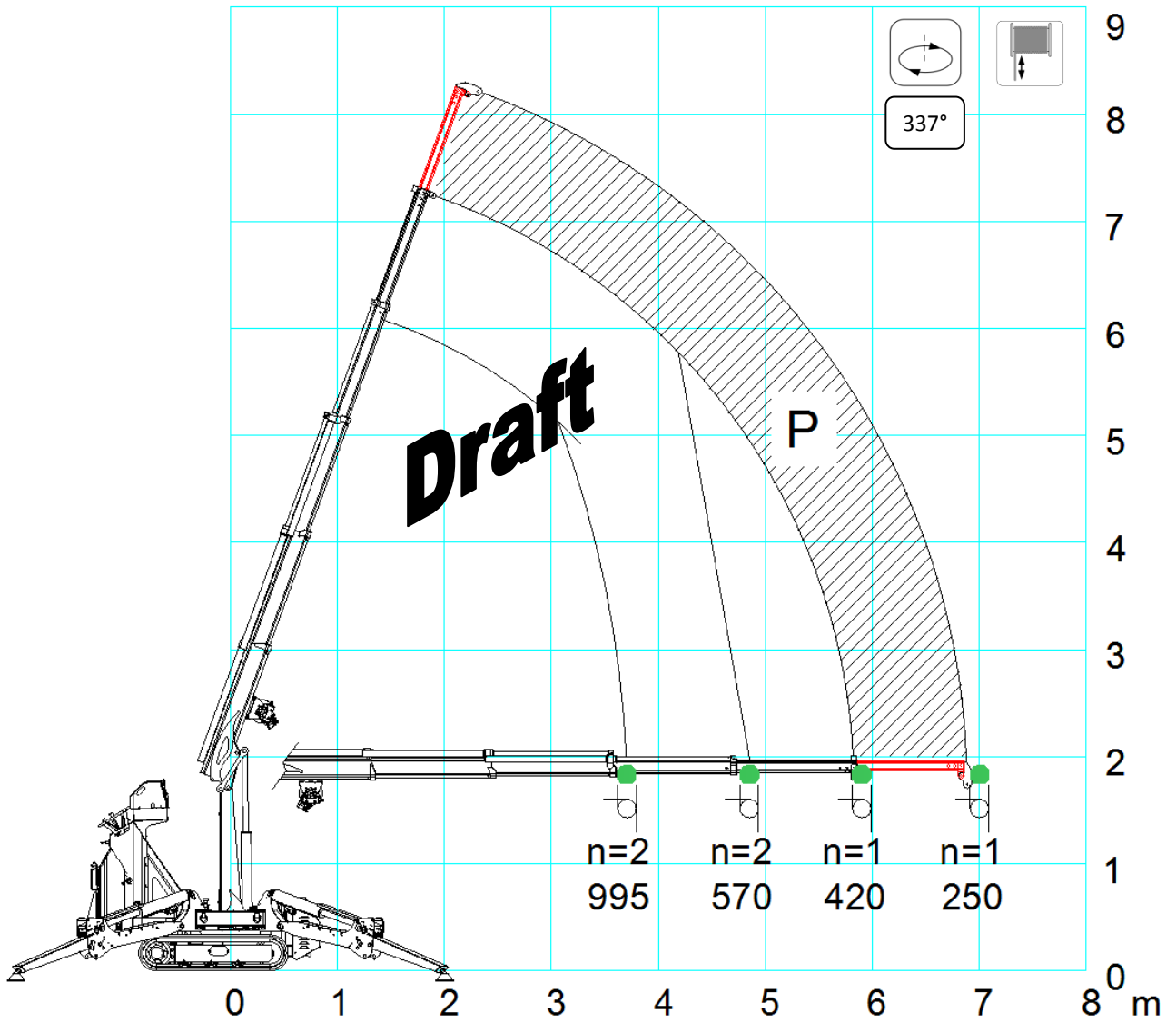


JF40

JF40 - HOOK

P area with manual extension P mounted.

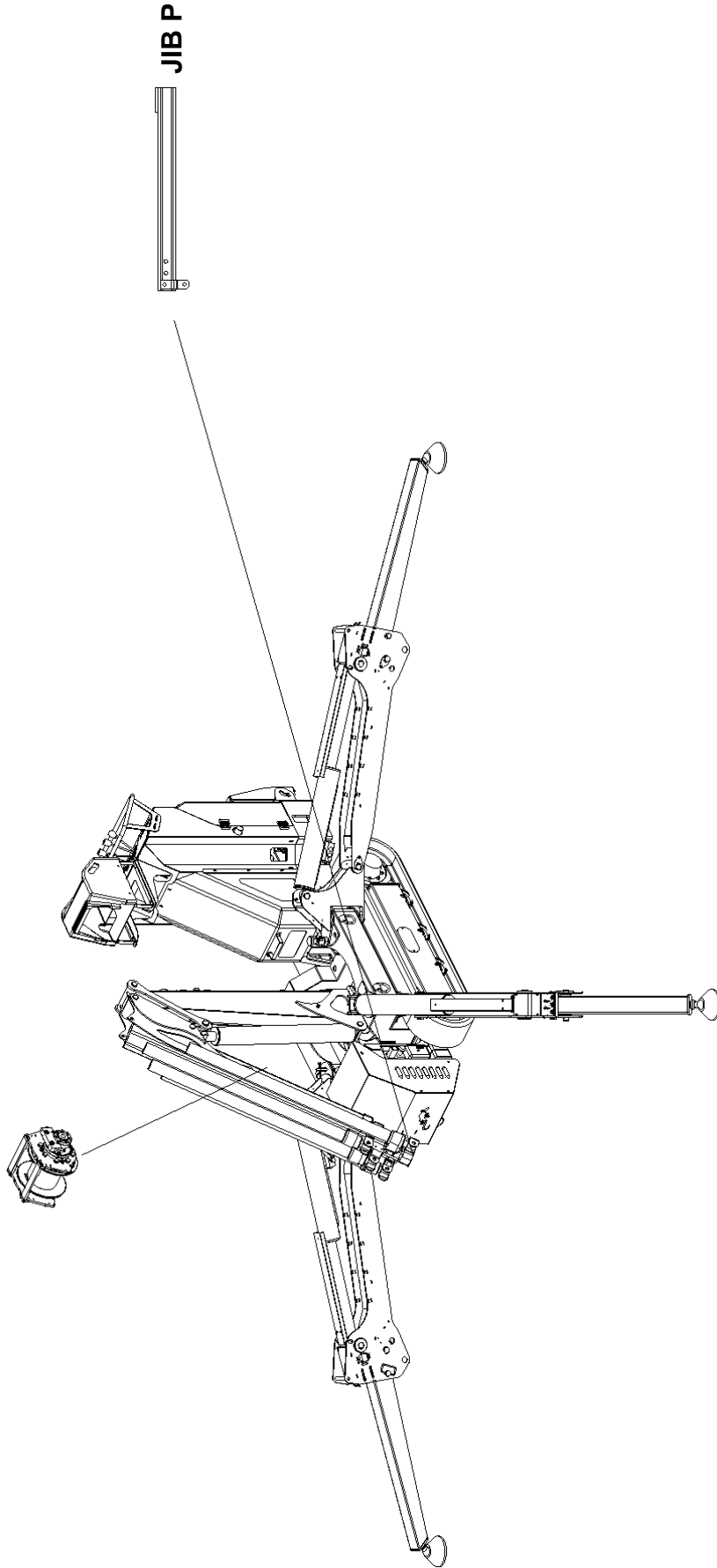
JF40 - PULLEY



P area with manual extension P (optional) mounted.

ACCESSORIES

WINCH




	STD	PC-02	PC-12
Boom, Covers & Outriggers	<input type="checkbox"/> RAL2004	<input type="checkbox"/> RAL_____	<input type="checkbox"/> RAL_____
Chassis, Frames & Tanks	<input type="checkbox"/> RAL7001	<input type="checkbox"/> RAL7001	<input type="checkbox"/> RAL_____



ACCESSORIES FEATURES

JIB P

	kg
	9

SYMBOLS

	Weight		Chart Wheels		Engine		Jib length and angle
	Counterweight		Minipicker		Diesel Fuel		Jib Length
	Crane		Back Wheel Point Loading		Gasoline Fuel		Jib Radius
	Travel Speed		Front wheel Point Loading		Tank		Hydraulic Jib Length
	Gradeability		Travel Speed		Battery		Hydraulic Jib Radius
	Outrigger Load		Gradeability		Power		Mechanical Jib Length
	Track Loading		Working Radius		Boom Angle		Mechanical Jib Radius
	Outriggers Setup		Hookblock		Boom Length		Manipulator Length
	Ext Tracks Width		Slewing		Boom Radius		Manipulator Radius
	Chart On Tracks		Slewing Locked		Jib Hook Radius		Maximum inclination of the machinery
	Jib on board		Without jib on board		Standard		Stabilizing bar
	Horizontal boom angle		Number of vacuum pads		Factory max. load		Building site max. load

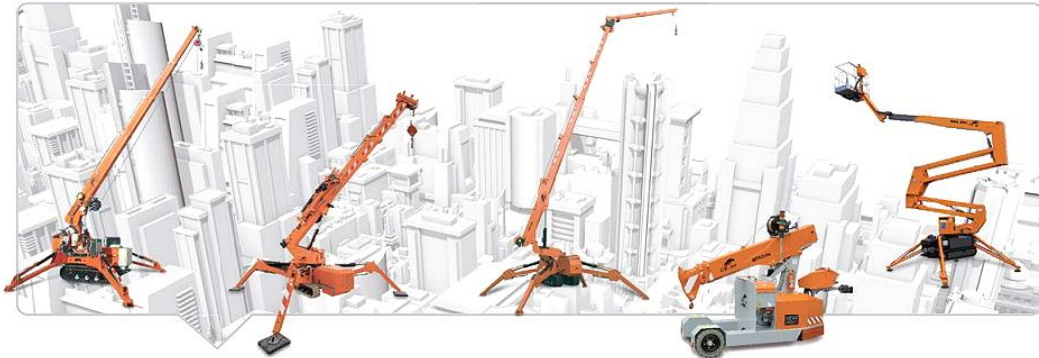
Remarks referring to load chart

- The load charts are calculated according to EN 13000.
- For the calculation of the load charts at least a wind speed of 9m/s (33km/h) and regarding the load a sail area of 1m² per ton load and a wind resistance coefficient of 1.2 on the load have been taken into account. For lifting of loads with large sail areas and/or high wind resistance coefficients the maximum wind speed as stated in the load charts has to be reduced.
- Lifting capacities are given in kilograms.
- The weight of the hook blocks and hooks is part of the load and therefore it must be deducted from the lifting capacities.
- Working radii are measured from the slewing centre.
- The lifting capacities given for the telescopic boom apply if the folding jib is removed.
- Subject to modification of lifting capacities.



NOTES

A large, empty rectangular box with a thin black border, intended for taking notes.



DEALER



JEKKO S.r.l. via Campardone, 1 Z.I. 31014 Colle Umberto (TV) Italy
tel. +39 0438 1710083 fax +39 0438 1710123
www.jekko.it - info@jekko.it